


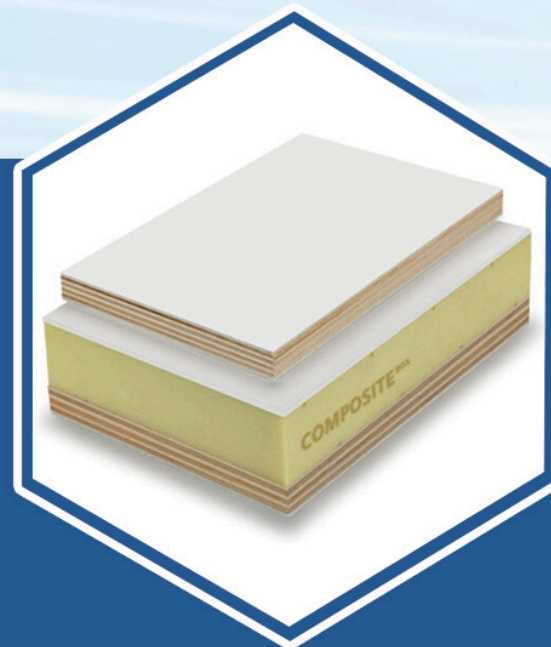
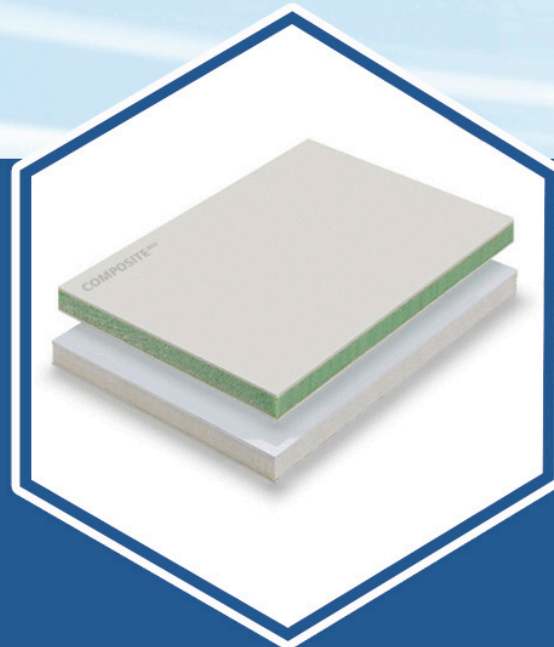
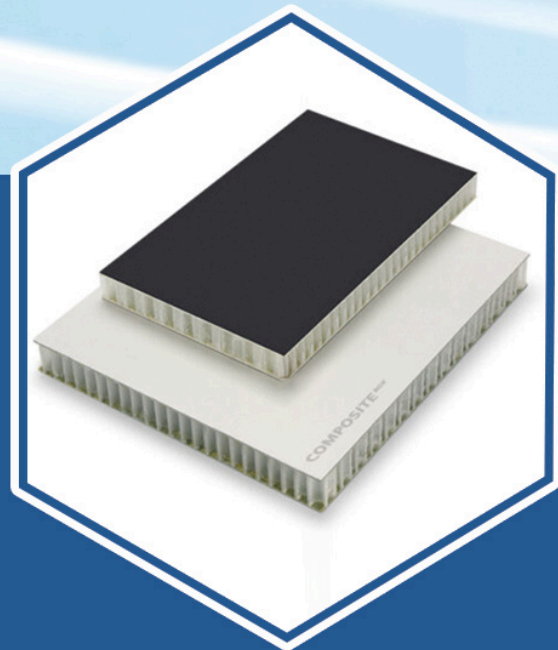
CONTACT US

Fiberglass Box Truck Bodies

 No. 158, Xinjunhuan Road, Minhang District, Shanghai

 <https://composite-box.com/>

 info@composite-box.com



info@composite-box.com



Fiberglass Box Truck Bodies

Description:

Composite Box ’ s Fiberglass Truck Body is a lightweight, durable solution for versatile transport. Featuring fiberglass sandwich panels with foam, plywood, or PP honeycomb cores, it offers modular CKD/CKL assembly. Ideal for box trucks, reefers, and trailers, it ensures high performance and a lifespan exceeding 30 years.

Features:

- Sizes: 4.2m to 12m long panels.
- Cores: Foam, plywood, or PP honeycomb.
- Durability: Impact-resistant, long-lasting finish.
- Kits: E-track, LED lights, various doors.
- Customizable: 100% tailored to your needs.

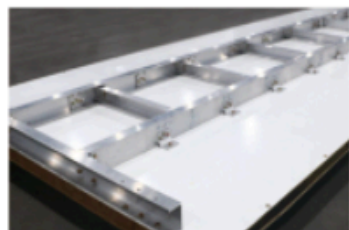
Kits:



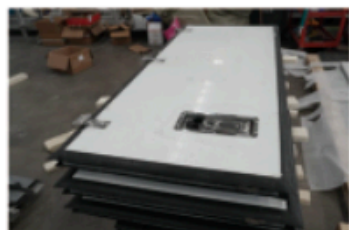
Truck Door Locks



Door Frame



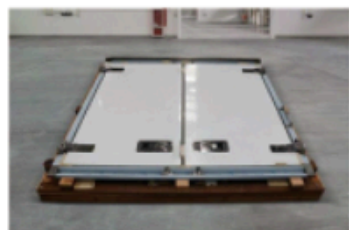
Truck Subframe



Truck Door Locks



Door Frame



Truck Subframe



Advantages:

This Fiberglass Truck Body is 40% lighter than metal, boosting fuel efficiency. Its corrosion-resistant, waterproof fiberglass surface ensures stability in harsh conditions, outlasting steel or wood with a 30-year lifespan. Easy to maintain and fully customizable, it ’ s perfect for freight, medical, or food transport, delivering cost-effective, high-performance solutions with Composite Box ’ s expert design support.

Common Parameters



Customer Satisfaction

Insisting on high quality products and servers, centered around customer experience



Quality Assurance

We strictly control every production process to bring reliable quality assurance to our customers



Advanced Production Line

The world’ s top production line ensures product precision and efficiency



Customization

We provide 100% customization, making orders less difficult