


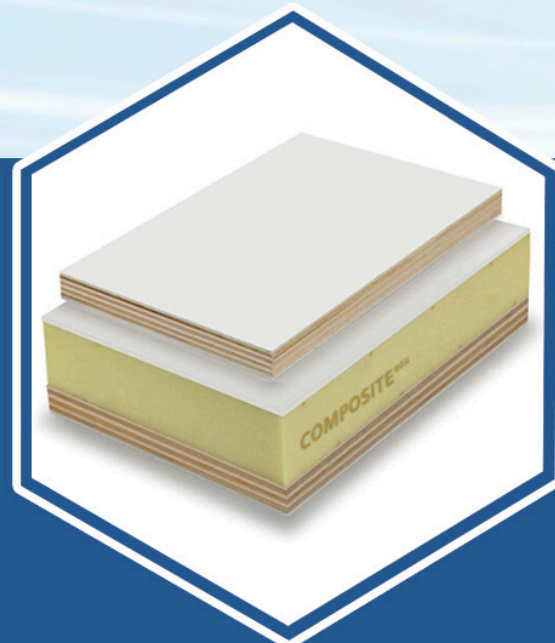
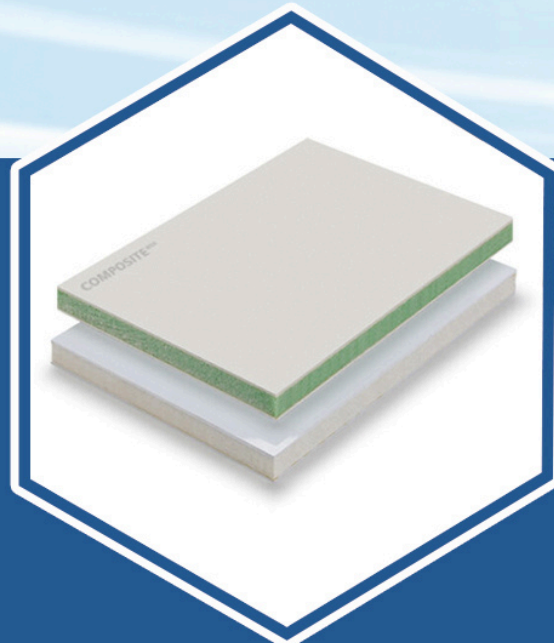
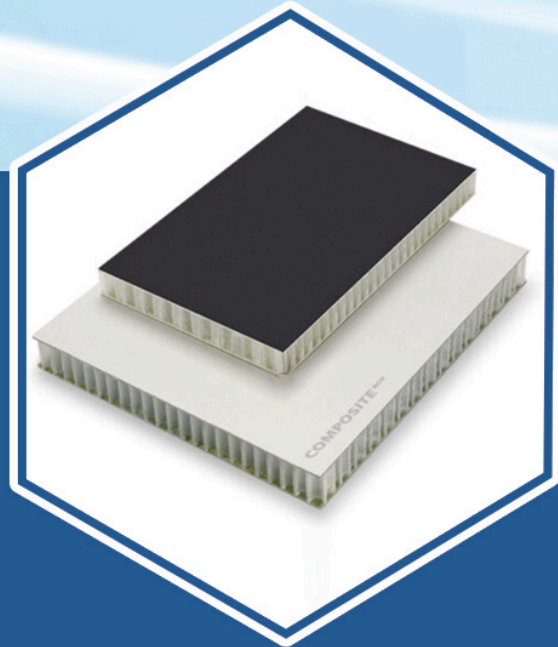
CONTACT US

26 FT Refrigerated Box Truck Body

 No. 158, Xinjunhuan Road, Minhang District, Shanghai

 <https://composite-box.com/>

 info@composite-box.com



info@composite-box.com



26 FT Refrigerated Box Truck Body

Description:

Composite Box presents its top-of-the-line 26 FT Refrigerated Box Truck Body, engineered for excellence in cold chain transportation. Ideal for distributors and logistics firms, it's crafted with high-quality fiberglass foam sandwich panels and a strengthened steel structure. This heavy-duty solution ensures reliable insulation and durability, making it perfect for hauling perishable goods like meat, produce, and pharmaceuticals across long distances.

Features:

- Utilizes PU and XPS foam for outstanding insulation.
- Lightweight yet durable, over 35% lighter than aluminum.
- Customizable design with options for electric tailgate and side door configurations.
- Volume ranges from 2600 - 2100 cubic feet, load capacity 9000 - 26000 lbs.

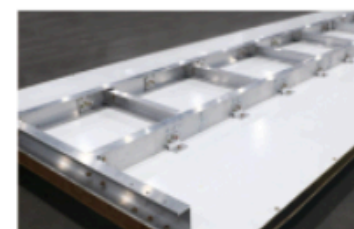
Kits:



Truck Door Locks



Door Frame



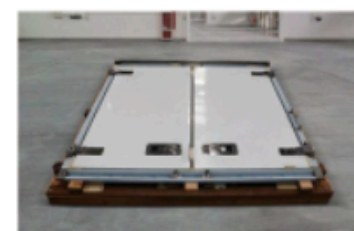
Truck Subframe



Truck Door Locks



Door Frame



Truck Subframe



Advantages:

1. Exceptional Insulation: Advanced foams and fiberglass keep temps steady, cutting spoilage of perishables like ice cream and produce.
2. Customizable: Tailor all aspects, from multi-temp zones to door styles, for any operation.
3. Quick Assembly: Bolt-on modular design lets 2 people install in 6 hours, saving time and cost.
4. Durable: Steel structure and quality materials endure long-haul rigors, offering a reliable cold chain solution.

Common Parameters

 <p>Customer Satisfaction</p> <p>Insisting on high quality products and services, centered around customer experience</p>	 <p>Quality Assurance</p> <p>We strictly control every production process to bring reliable quality assurance to our customers</p>	 <p>Advanced Production Line</p> <p>The world's top production line ensures product precision and efficiency</p>	 <p>Customization</p> <p>We provide 100% customization, making orders less difficult</p>
---	--	--	--