

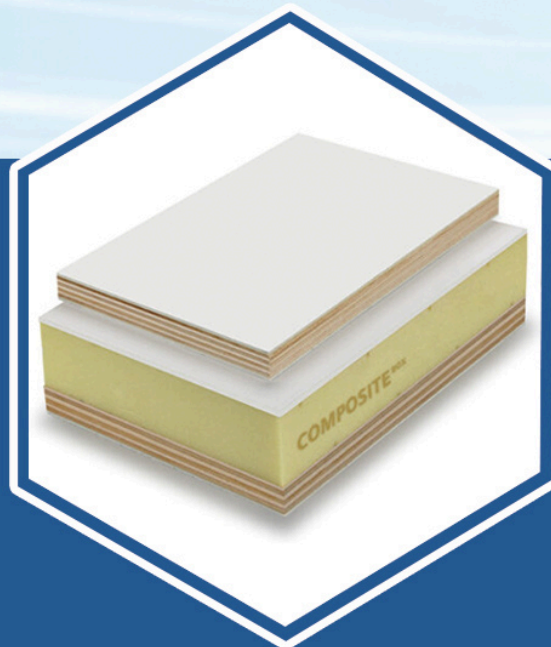
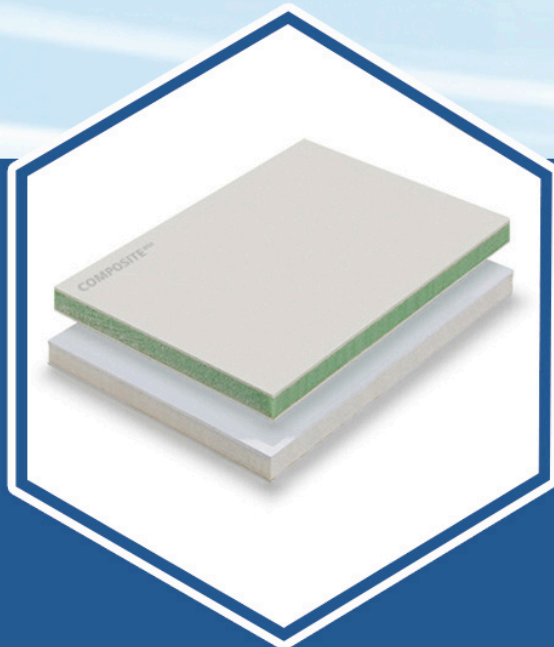
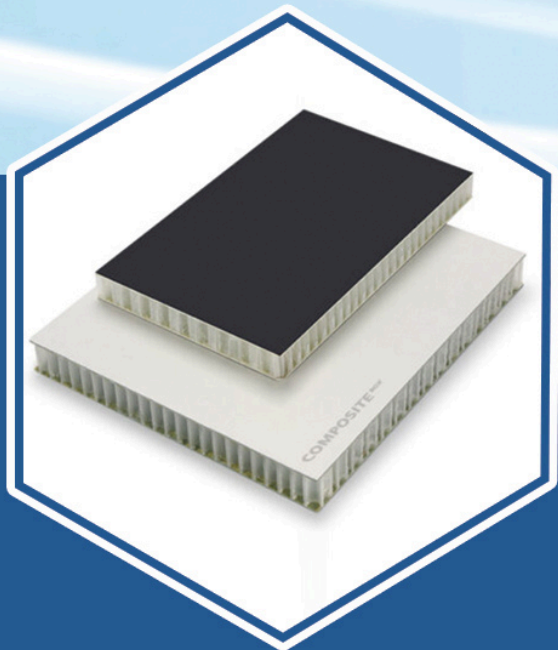
## CONTACT US

# WING BODY VAN TRUCK

📍 No. 158, Xinjunhuan Road, Minhang District, Shanghai

🌐 <https://composite-box.com/>

✉ [info@composite-box.com](mailto:info@composite-box.com)



[info@composite-box.com](mailto:info@composite-box.com)





# WING BODY VAN TRUCK

## Description:

Composite Box’ s Wing Body Van Truck features fiberglass sandwich panels or aluminum, with side-opening “seagull” wings for fast loading. Ranging from 2.5 to 11.8 meters, it supports up to 30 tons. Ideal for logistics, it offers customizable hydraulics or canvas options, enhancing efficiency for food, timber, and heavy goods transport.

## Features:

- Sizes: 2.5m to 11.8m lengths.
- Load: Up to 30 tons capacity.
- Materials: FRP foam panels or aluminum.
- Wings: Manual/hydraulic side-opening panels.
- Kits: Hinges, locks, E-track included.

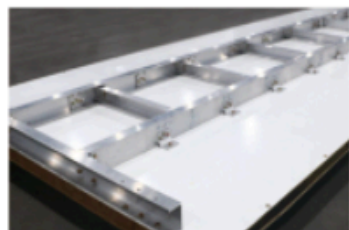
## Kits:



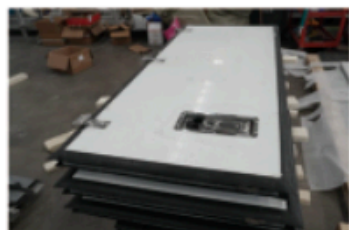
Truck Door Locks



Door Frame



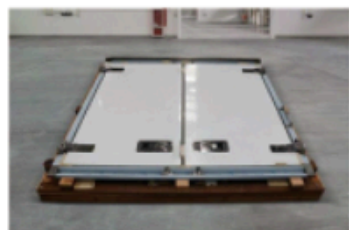
Truck Subframe



Truck Door Locks



Door Frame



Truck Subframe



## Advantages:

This Wing Body Van Truck combines lightweight FRP or aluminum construction for fuel efficiency with durable, impact-resistant panels. Its unique side-opening design speeds up loading/unloading, ideal for logistics and heavy cargo. With insulation capabilities and a customizable structure, it ensures stable temperatures and versatility, offering a long-lasting, cost-effective solution for transporting diverse goods.

## Common Parameters



### Customer Satisfaction

Insisting on high quality products and servers, centered around customer experience



### Quality Assurance

We strictly control every production process to bring reliable quality assurance to our customers



### Advanced Production Line

The world’ s top production line ensures product precision and efficiency



### Customization

We provide 100% customization, making orders less difficult