


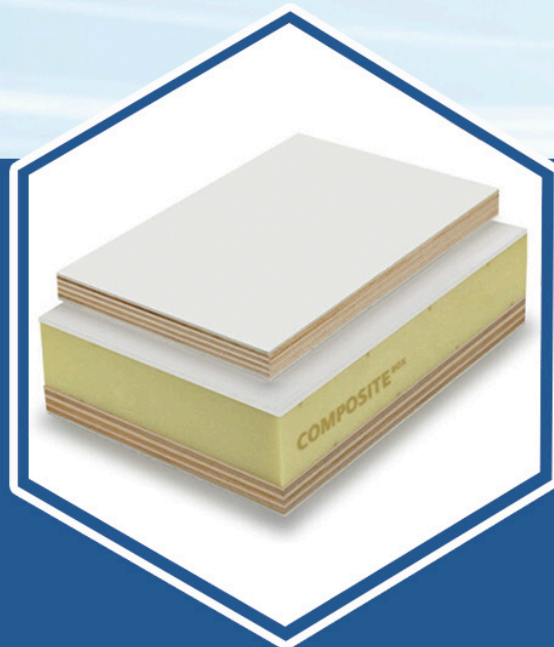
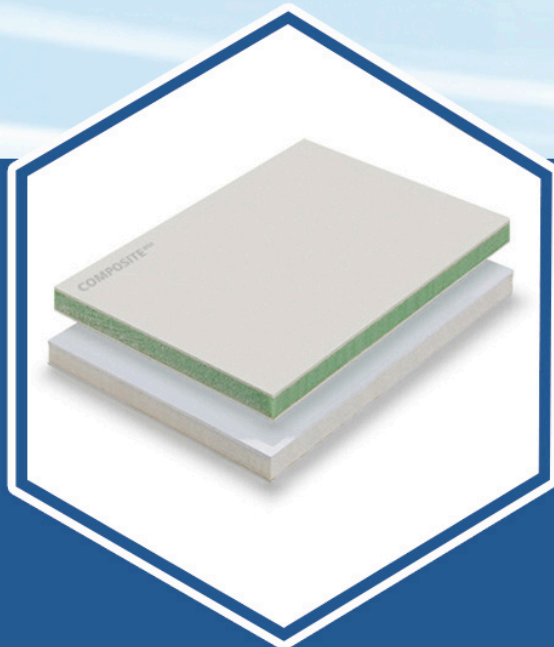
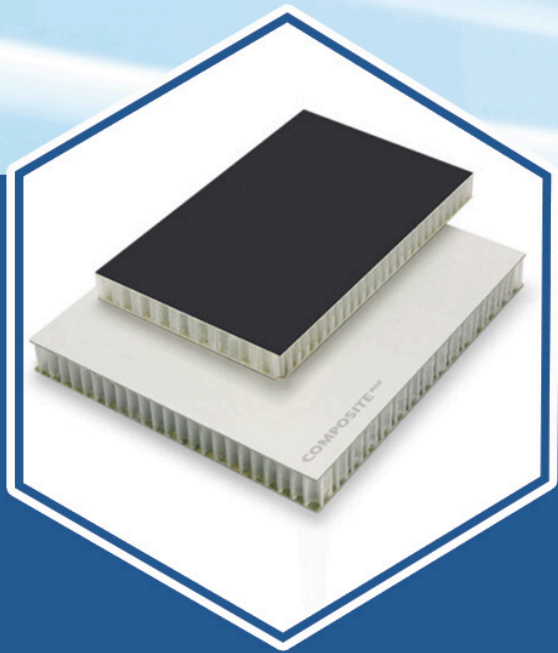
CONTACT US

PROFESSIONAL SEMI-TRAILER BOX BODY

 No. 158, Xinjunhuan Road, Minhang District, Shanghai

 <https://composite-box.com/>

 info@composite-box.com



info@composite-box.com



PROFESSIONAL SEMI-TRAILER BOX BODY

Description:

Composite Box’ s Fiberglass Semi-Trailer Box Body is a modular, high-performance solution for long-distance transport. Featuring FRP skin and XPS foam panels, it supports 30-100 ton loads. Ideal for refrigerated and insulated hauling, this lightweight trailer offers customizable sizes up to 12 meters and multi-temperature zones for diverse cargo needs.

Features:

- Sizes: 20 ft, 40 ft, 45 ft options.
- Load: 30-100 tons capacity.
- Materials: FRP skin, XPS foam core.
- Kits: Over 15 options, including E-track, doors.
- Customization: Multi-temperature zones, adjustable height.

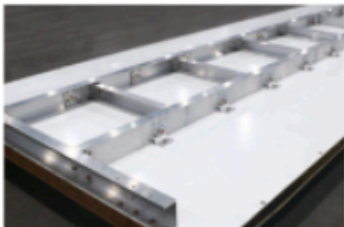
Kits:



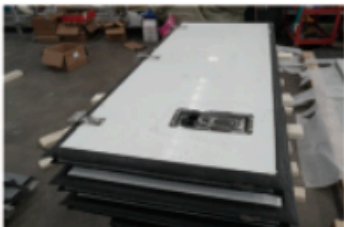
Truck Door Locks



Door Frame



Truck Subframe



Truck Door Locks



Door Frame



Truck Subframe

Advantages:

This semi-trailer box body uses lightweight FRP and XPS foam, cutting weight by 30% compared to aluminum, boosting fuel efficiency. Its durable, impact-resistant design lasts up to 10 years, with excellent insulation from -20°C to 50°C. Customizable thickness and abundant kits ensure fast loading and versatility for refrigerated goods, making it a cost-effective choice for long-haul transport.

Common Parameters



Customer Satisfaction

Insisting on high quality products and services, centered around customer experience



Quality Assurance

We strictly control every production process to bring reliable quality assurance to our customers



Advanced Production Line

The world’ s top production line ensures product precision and efficiency



Customization

We provide 100% customization, making orders less difficult