

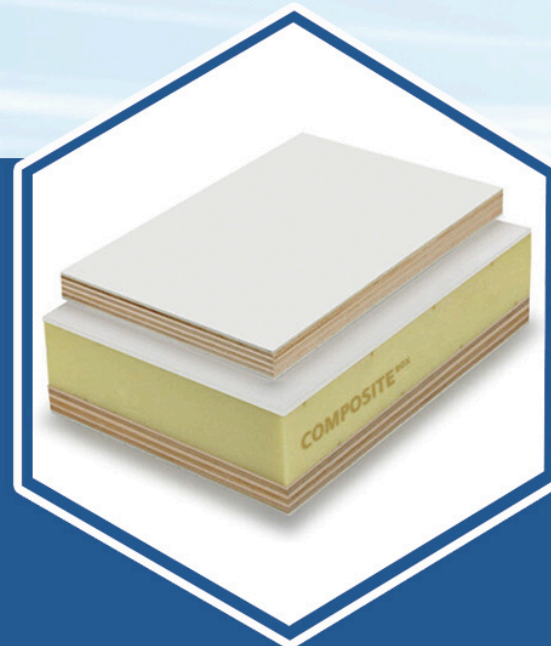
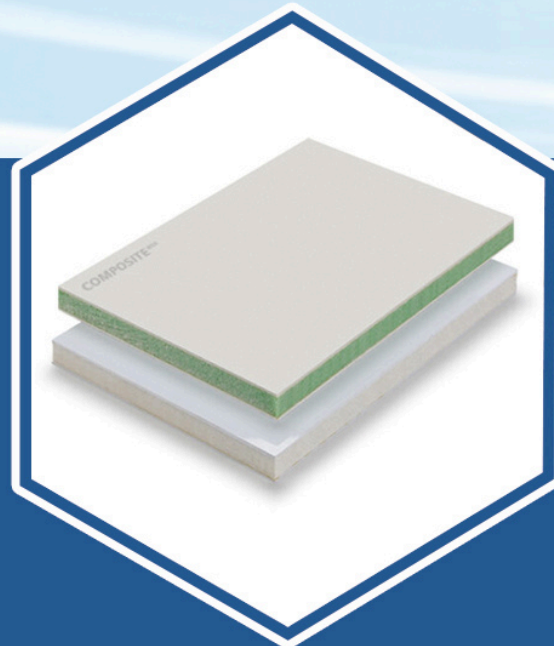
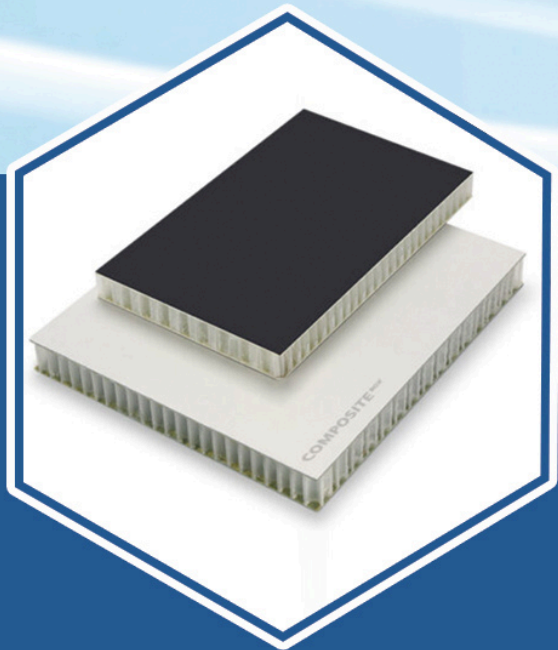
CONTACT US

ALUMINUM BOX TRUCK BODIES

📍 No. 158, Xinjunhuan Road, Minhang District, Shanghai

🌐 <https://composite-box.com/>

✉ info@composite-box.com



info@composite-box.com



ALUMINUM BOX TRUCK BODIES

Description:

Composite Box ’ s Drop Side Truck Body is a lightweight, durable solution for side and rear loading. Built with 6000 series aluminum, it handles 10-30 tons of unpackaged goods like construction materials and machinery. Its modular design ensures easy assembly and efficient transport in any terrain.

Features:

- Sizes: 6m to 12m lengths.
- Load: 10-30 tons capacity.
- Material: 6000 series aluminum.
- Kits: Hydraulic system, E-track, lights.
- Assembly: Modular, CKD/SKD options.

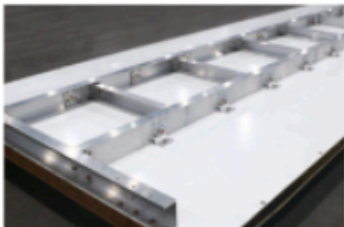
Kits:



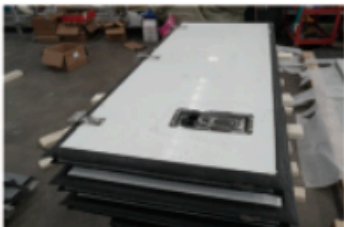
Truck Door Locks



Door Frame



Truck Subframe



Truck Door Locks



Door Frame



Truck Subframe



Advantages:

This drop side truck body, made from high-strength aluminum, is 50% lighter than steel, reducing fuel costs and boosting efficiency. Its rust-resistant, durable design outperforms wood and steel, lasting longer with minimal maintenance. Modular assembly and customizable kits ensure quick setup and reliable transport of heavy, irregular cargo like gravel or ores.

Common Parameters



Customer Satisfaction

Insisting on high quality products and servers, centered around customer experience



Quality Assurance

We strictly control every production process to bring reliable quality assurance to our customers



Advanced Production Line

The world’ s top production line ensures product precision and efficiency



Customization

We provide 100% customization, making orders less difficult