

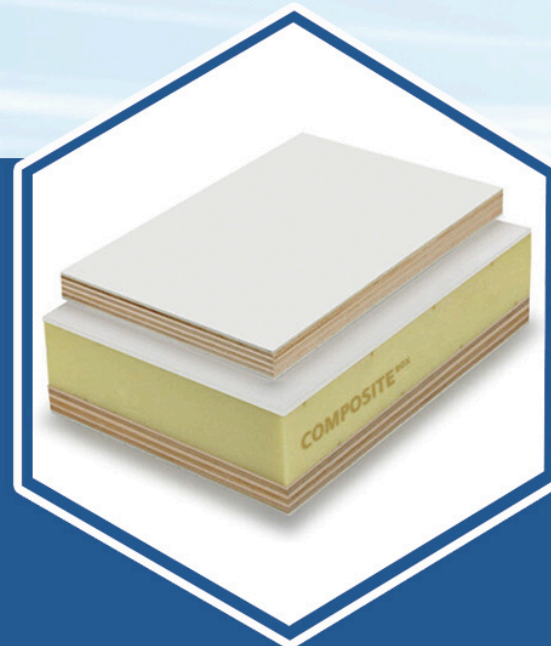
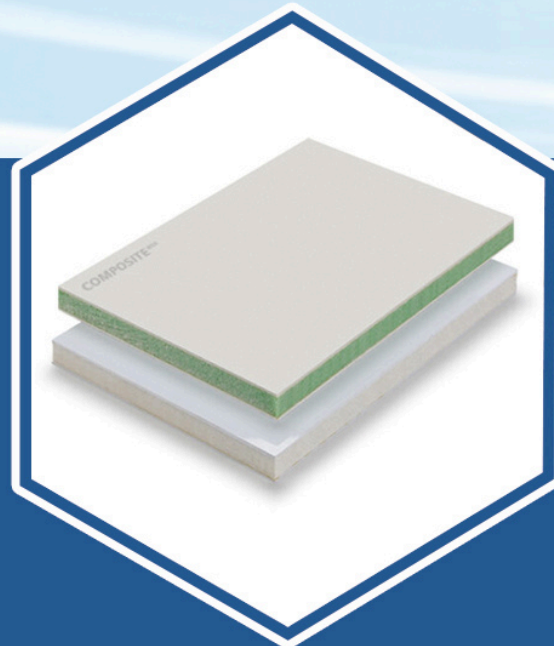
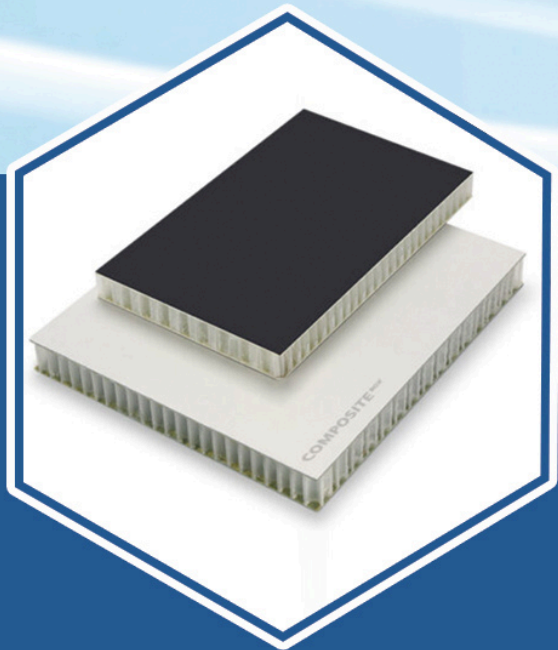
CONTACT US

ALUMINUM BOX TRUCK BODIES

📍 No. 158, Xinjunhuan Road, Minhang District, Shanghai

🌐 <https://composite-box.com/>

✉ info@composite-box.com



info@composite-box.com



ALUMINUM BOX TRUCK BODIES

Description:

Composite Box ’ s Aluminum Box Truck Body offers a lightweight, durable alternative to steel. With lengths from 3m to 8m, its modular design ensures easy assembly and a 40+ year lifespan. Perfect for freight and intercity transport, it combines strength, corrosion resistance, and a sleek metallic finish.

Features:

- Sizes: 3m to 8m lengths.
- Load: Up to 10 tons capacity.
- Material: Lightweight aluminum panels.
- Kits: LED lights, E-track, doors.
- Assembly: Modular with rivets/bolts.

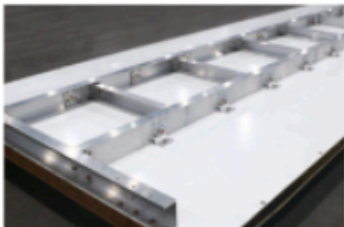
Kits:



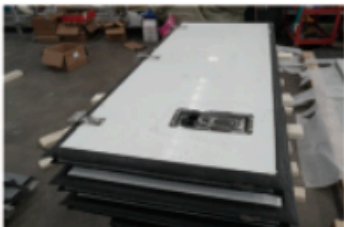
Truck Door Locks



Door Frame



Truck Subframe



Truck Door Locks



Door Frame



Truck Subframe



Advantages:

This aluminum truck body is 50% lighter than steel, boosting fuel efficiency while resisting corrosion for over 40 years. Its seamless, impact-resistant design ensures durability and a stunning appearance. Customizable with kits like locks and lights, it ’ s a cost-effective, high-strength solution for reliable freight transport across cities and continents.

Common Parameters



Customer Satisfaction

Insisting on high quality products and servers, centered around customer experience



Quality Assurance

We strictly control every production process to bring reliable quality assurance to our customers



Advanced Production Line

The world’ s top production line ensures product precision and efficiency



Customization

We provide 100% customization, making orders less difficult